

FLOWERS & VEGETABLES – DEPARTMENT 07

Superintendent: Sal Madonna – 585-764-9360 (smadonna@rochester.rr.com)

Mike Centola – 585-467-3809 (mvcent@yahoo.com)

Day of Show Entry

Welcome to the 2009 Monroe County Fair Flower and Vegetable Show. Our Flower Show theme this year is “Everybody’s Goin’ to the Fair”. We appreciate your participation and intend to make your County Fair experience as easy and pleasant as possible. Please read the following Flower & Vegetable Show schedule carefully and be assured that we are here to help you in any manner we can.

Premium Awards for Each Class

Best of Section Award – Rosette

<u>Adult</u>		
1 st (Blue Ribbon) \$ 2.00	2 nd (Red Ribbon) \$ 1.00	3 rd (Yellow Ribbon)
<u>Youth</u>		
1 st (Blue Ribbon) \$1.25	2 nd (Red Ribbon) \$.75	3 rd (Yellow Ribbon)

Best of Show Trophy in memory of Julia B. Meister for all sections except E & F

No Entry Fee for Youth Exhibits

Monroe County Fair Gardener of the Year and Junior Gardener of the Year recognition is for the exhibitor who accumulates the most points by combining awards from the various Flower & Vegetable Show sections staged during the five days of our 2009 Monroe County Fair.

- All sections and classes are open to entry by the general public, using entry blank provided. Copies are acceptable.
- Entry fee is \$.50 for each exhibit entered. All entries must be listed on entry form for each section being entered.
- Exhibitors are responsible for placing their exhibits and entering them in proper classes. Assistance will be given if needed. If you don't know, we will make every effort to assure your entry is in the correct class.
- Only judges, clerks, and necessary officials will be permitted in the Flower Show area during judging.
- The decision of judges shall be final.
- Exhibits will remain on display as long as they remain attractive. No exhibit may be removed before the end of staging period.
- All entries must be in place by 11:00am on the day of show. No entries accepted after that time. Judging will be at 11:30am sharp.
- All entries must be brought to the north side entrance to the Dome. Enter fairgrounds via Calkins Road and take your first left. Follow signs “For Exhibitors”. Only exhibitors will be allowed in. Tell attendant you are an exhibitor.
- Ribbons and tags will not be mailed to winners. They may be picked up from the Superintendent after the end of the exhibit's staging period at 7:00pm Sunday, July 19 or Monday, July 20 between 3:00pm-7:00pm at the Fair Office.
- Competition is open to all. Multiple entries accepted.
 - Youth are exhibitors under age 19. On entry form, use “Y” or “Y-4H” under Division.
 - Adult are exhibitors ages 19 and over. On entry form, use “A” (Adult) under Division.
- Please refer to show you are entering for specific entry dates and times.
- Advance registration is NOT required. The Flower & Vegetable Show is day of show entry and entry form should be brought with your exhibits.
- You can download an entry form from the fair's website - www.mcfair.com.

FLOWER & VEGETABLE SHOW SCHEDULE

July 15, 2009 – July 19, 2009

(Entries will be accepted Tuesday evening, July 14, 4:00pm-8:00pm, and Wednesday morning, July 15, 8:00am-11:00am)

Wednesday, July 15

Hostas

(Entries will be accepted Wednesday evening, July 15, 6:00pm-8:00pm and Thursday morning, July 16, 8:00am-11:00am)

Thursday, July 16

Section B

Container Grown Plants

Section D

African Violets

Section C

Dahlias

Section E

Hydroponically Grown Fruits & Vegetables

(Entries will be accepted Thursday evening, July 16, 6:00pm-8:00pm and Friday morning, July 17, 8:00am-11:00am)

Friday, July 17

Section F

Florist's Displays

(Entries will be accepted Friday evening, July 17, 6:00pm-8:00pm and Saturday morning, July 18, 8:00am-11:00am)

Saturday, July 18

Section G

Cut Flowers

Section I

Fruits & Vegetables

SPECIAL ACTIVITY

Paint-A-Pot; Pot-A-Plant

Friday, July 17	4pm - 8pm
Saturday, July 18	5pm - 8pm
Sunday, July 19	4pm - 7pm

SECTION A - PEOPLES CHOICE AWARDS

Class No.		
1.	People's Choice Florist Displays – Vote on Friday & Saturday	Rosette
2.	Celebrity Choice Award Local celebrities pick their favorite flower exhibit.	Rosette

SECTION B – INDOOR CONTAINER GROWN PLANTS & HOUSEPLANTS

Thursday, July 16, 2009

- Exhibitors may make two entries in class, provided such entries are different varieties. Entry tag should show variety name.
- All entries will be protected as carefully as possible, but the Fair is not responsible for any damage which may occur during the show.
- The planting should have been in the care of the exhibitor for a period of at least six weeks.

Classes

1. Cactus	6. Hanging Foliage Plant	11. Multiple Plant Pot
2. Hanging Flowering Plant	7. Hens and Chickens	12. Any Flowering Plant
3. Terrarium Planting	8. Succulent - Large	13. Any Potted Vegetable
4. Any Foliage Plant	9. Succulent - Small	14. Any Other Potted Plant
5. Dish Garden	10. Indoor Potted Herbs	15. Any Other Houseplant

SECTION C – DAHLIAS

Thursday, July 16, 2009

- All specimens must have sufficient foliage attached to stem above top of container to permit its proper evaluation. Two sets of leaves will be about right for most sizes, however, one set will be acceptable on some small and miscellaneous types.
- Each specimen must be disbudded and disbranched.
- Entries calling for 3 blooms must be three specimens of the same variety exhibited in one container.
- An exhibitor may make multiple entries in a class if they are different varieties. Desirable measurements:

A. Size over 8"	Ball over 3.5"
B. Size over 6" to 8"	Mignon Single up to 2"
BB. Size over 4" to 6"	FD-Formal Decorative
M. Size up to 4"	ID-Informal Decorative
Pompom up to 2"	SC-Semi Cactus
Miniature Ball 2" to 3.5"	CAC-Incurved or Straight Cactus

(1 bloom unless indicated otherwise)

Classes

	(Formal)	(Informal)	(Semicactus)	(Straight Cactus or incurved)
Size	FD	ID	SC	
A	1.	2.	3.	4.
B	5.	6.	7.	8.
BB	9.	10.	11.	12.
MINIATURE	13.	14.	15.	
16. Pompom		21. Container Dahlias		
17. Ball		22. Peony		
18. Anemone		23. Other type		
19. Mignon Single		24. 3 blooms (any variety)		

20. Water Lily

SECTION D – AFRICAN VIOLETS
Thursday, July 19, 2009

Rules

- Any color pot is permissible, provided pot is clean and non-decorative.
- All cultivars and species shall be correctly labeled, to the best ability of the exhibitor.
- All plants must be: (1) in bloom and (2) single crowned, with the exception of trailers.
- Classification committee reserves the right to subdivide any class with numerous entries.
- Supports under foliage or flared top pots are not permitted.
- An exhibitor may enter only one specimen of a variety in a class. However, he/she may enter any number of varieties in each class. Plants of the same variety may be entered in different classes.

Class No.

1. Standard Violets
2. Miniature and Semi-miniature Violets
3. Trailing violets
4. Violet growing in a decorative container (one plant only)

SECTION E – Hydroponics
Thursday, July 16, 2009

- Any hydroponically grown fruit
- Any hydroponically grown vegetable

Class No.

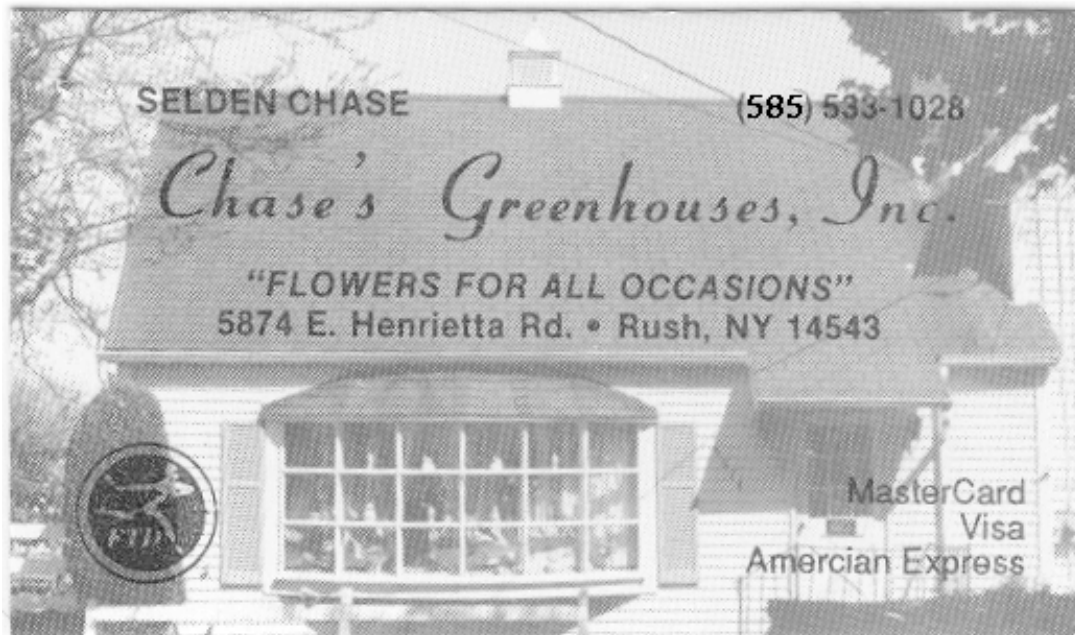
1. Lettuce
2. Tomatoes
3. Herbs
4. Peppers
5. Any Other Vegetable
6. Any Fruit

SECTION F – FLORIST'S DISPLAYS
Friday, July 17, 2009
Rosette

Florists can design a table centerpiece of seasonal flowers using fresh flowers and other materials. No entry fee.

Class No.

1. Retail value up to \$50
2. Unlimited retail value



SECTION G - CUT FLOWERS
Saturday, July 18, 2009

PLEASE NOTE: The number of specimens required for each class is in () after each class name. For example: Aster, single (3)

Class	Class
1. Ageratum (3 stems)	43. Larkspur (3 stems)
2. Alyssum (3 stems)	44. Liatris (1 stem)
3. Aster, single (3 blooms)	45. Lily (1 stem)
4. Aster, double (3 blooms)	46. Lisianthus (1 stem)
5. Aster, powder puff (3 blooms)	47. Marigold, Tall American (1 stem)
6. Astilbe (3 blooms)	48. Marigold, Dwarf French, solid color, single (3 blooms)
7. Balloon Flower (3 stems)	49. Marigold, Dwarf French, solid color, double (3 blooms)
8. Begonia, fibrous (3 stems)	50. Marigold, Dwarf French, bicolor/variegated, single (3 blooms)
9. Begonia, tuberous (1 stem or bloom)-Rose or Camella	51. Marigold, Dwarf French, bicolor/variegated, double (3 blooms)
10. Begonia, tuberous - Semi-ruffled or ruffled	52. Marigold, Any Other Variety, single (1 stem)
11. Begonia, tuberous - Picotee, Rose or Camella	53. Marigold, Any Other Variety, double (1 stem)
12. Begonia, tuberous - Picotee, semi-ruffled	54. Monarda (3 blooms)
13. Calendula (3 blooms)	55. Nasturtium (3 blooms)
14. Calla Lilly (2 bloom)	56. Nicotiana (3 stems)
15. Campanula (3 stems)	57. Ornamental Grasses (3 stems)
16. Carnation (3 blooms)	58. Pansy (3 blooms)
17. Celosia, crista (1 stem)	59. Penstemon (3 stems)
18. Celosia, plumrose (3 stems)	60. Petunia, single (1 spray)
19. Clematis (1 bloom)	61. Petunia, double (1 spray)
20. Cleome (Spider flower) (1 stem)	62. Phlox (3 stems)
21. Coleus (3 stems)	63. Rose of Sharon (3 stems)
22. Cone Flower (3 stems)	64. Rudbeckia (3 stems)
23. Coral Bells (3 stems)	65. Salvia (3 stems)
24. Coreopsis (3 stems)	66. Schizanthus (3 stems)
25. Cosmos, single (3 blooms)	67. Snapdragon (3 stems)
26. Cosmos, double (3 blooms)	68. Statice (3 stems)
27. Daisy, Shasta (3 blooms)	69. Sunflower, large flowered (1 stem)
28. Black Eyed Susan (3 blooms)	70. Sunflower, small or decorative (3 stems)
29. Daylily (small to medium) (1 scape)	71. Sweet Peas (3 stems)
30. Daylily (large) (1 scape)	72. Sweet Williams (3 blooms)
31. Delphinium (1 spike)	73. Verbena (3 stems)
32. Dianthus (3 stems)	74. Viola (3 blooms)
33. Digitalis (3 stems)	75. Water Lilly (1 bloom)
34. Gaillardia (3 blooms)	76. Yarrow (3 stems)
35. Gazania (3 blooms)	77. Zinnia, Giant Dahlia type (3 blooms)
36. Geranium (3 blooms)	78. Zinnia, Cactus type (3 blooms)
37. Hollyhock (1 stem)	79. Zinnia, miniature (3 blooms)
38. Hosta (3 blooms)	80. Zinnia, any other type (3 blooms)
39. Hydrangea (1 stem)	81. Any other biennial not listed (1 stem)
40. Impatiens, single (3 stems)	82. Any other perennial not listed (1 stem)
41. Impatiens, double (3 stems)	83. Any flowering or berried branch (1 branch)
42. Impatiens, New Guinea (3 stems)	84. Any other annual not listed (1 stem)

SECTION H - ROSES
Saturday, July 18, 2009

- If possible, label roses according to variety.
- More than one entry may be entered per class if they are of different varieties.
- color classification as suggested by the American Rose Society.

Hybrid Teas, Grandiflora (and their climbing forms) - Exhibition Bloom

- One bloom per stem.
- Exhibition blooms should be 1/3 to 3/4 open and have high pointed center with the surrounding petals forming a concentric circle around the center.

Class No.

1. Apricot - (ab) apricot & apricot blend
2. Orange - (ob) orange & orange blend, (op) orange-pink, (or) orange-red
3. Yellow - (yb) yellow blend, (ly) light yellow, (my) medium yellow, (dy) deep yellow
4. Red - (rb) red blend, (mr) medium red, (dr) dark red
5. Pink (pb) pink blend, (lp) light pink, (mp) medium pink, (dp) dark pink
6. Mauve - (m) mauve & mauve blend
7. Russet - (r) russet
8. White - (w) white, near white & white blend

Hybrid Teas, Grandiflora (and their climbing forms) - Sprays

- At least 2 blooms per stem.

Class No.

9. Apricot - (ab) apricot & apricot blend
10. Orange - (ob) orange & orange blend, (op) orange-pink, (or) orange-red
11. Yellow - (yb) yellow blend, (ly) light yellow, (my) medium yellow, (dy) deep yellow
12. Red - (rb) red blend, (mr) medium red, (dr) dark red
13. Pink (pb) pink blend, (lp) light pink, (mp) medium pink, (dp) dark pink
14. Mauve - (m) mauve & mauve blend
15. Russet - (r) russet
16. White - (w) white, near white & white blend

Hybrid Teas, Grandiflora (and their climbing forms) - Open Bloom

- Open bloom should be fully open with fresh stamens showing.

Class No.

17. Apricot - (ab) apricot & apricot blend
18. Orange - (ob) orange & orange blend, (op) orange-pink, (or) orange-red
19. Yellow - (yb) yellow blend, (ly) light yellow, (my) medium yellow, (dy) deep yellow
20. Red - (rb) red blend, (mr) medium red, (dr) dark red
21. Pink (pb) pink blend, (lp) light pink, (mp) medium pink, (dp) dark pink
22. Mauve - (m) mauve & mauve blend
23. Russet - (r) russet
24. White - (w) white, near white & white blend

Floribunda Single Bloom

Class No.

25. Apricot - (ab) apricot & apricot blend
26. Orange - (ob) orange & orange blend, (op) orange-pink, (or) orange-red
27. Yellow - (yb) yellow blend, (ly) light yellow, (my) medium yellow, (dy) deep yellow
28. Red - (rb) red blend, (mr) medium red, (dr) dark red
29. Pink (pb) pink blend, (lp) light pink, (mp) medium pink, (dp) dark pink
30. Mauve - (m) mauve & mauve blend
31. Russet - (r) russet
32. White - (w) white, near white & white blend

Floribundas Spray

Class No.

33. Apricot - (ab) apricot & apricot blend
34. Orange - (ob) orange & orange blend, (op) orange-pink, (or) orange-red
35. Yellow - (yb) yellow blend, (ly) light yellow, (my) medium yellow, (dy) deep yellow
36. Red - (rb) red blend, (mr) medium red, (dr) dark red
37. Pink (pb) pink blend, (lp) light pink, (mp) medium pink, (dp) dark pink
38. Mauve - (m) mauve & mauve blend
39. Russet - (rr) russet
40. White - (w) white, near white & white blend

Miniature Roses

- One bloom per stem.
- Exhibition blooms should be 1/3 to 3/4 open and have high pointed center with the surrounding petals forming a concentric circle around the center.
- Foliage required. No Sidebuds.

Class No.

41. Apricot - (ab) apricot & apricot blend
42. Orange - (ob) orange & orange blend, (op) orange-pink, (or) orange-red
43. Yellow - (yb) yellow blend, (ly) light yellow, (my) medium yellow, (dy) deep yellow
44. Red - (rb) red blend, (mr) medium red, (dr) dark red
45. Pink (pb) pink blend, (lp) light pink, (mp) medium pink, (dp) dark pink
46. Mauve - (m) mauve & mauve blend
47. Russet - (r) russet
48. White - (w) white, near white & white blend

Miniature Rose - Sprays

- At least 2 blooms per stem.

Class No.

49. Apricot - (ab) apricot & apricot blend
50. Orange - (ob) orange & orange blend, (op) orange-pink, (or) orange-red
51. Yellow - (yb) yellow blend, (ly) light yellow, (my) medium yellow, (dy) deep yellow
52. Red - (rb) red blend, (mr) medium red, (dr) dark red
53. Pink (pb) pink blend, (lp) light pink, (mp) medium pink, (dp) dark pink
54. Mauve - (m) mauve & mauve blend
55. Russet - (r) russet
56. White - (w) white, near white & white blend

Miniature Rose - Open Bloom

- Open bloom should be fully open with fresh stamens showing.

Class No.

57. Apricot - (ab) apricot & apricot blend
58. Orange - (ob) orange & orange blend, (op) orange-pink, (or) orange-red
59. Yellow - (yb) yellow blend, (ly) light yellow, (my) medium yellow, (dy) deep yellow
60. Red - (rb) red blend, (mr) medium red, (dr) dark red
61. Pink (pb) pink blend, (lp) light pink, (mp) medium pink, (dp) dark pink
62. Mauve - (m) mauve & mauve blend
63. Russet - (r) russet
64. White - (w) white, near white & white blend

Shrubs and Old Garden Roses

- One bloom, spray or stem.

Class No.

65. Any Climber - any color
66. Any Old Garden Roses - any color
67. Any English Shrub
68. Any Color - Any Shrub
69. Any other rose not listed - any color

SECTION I - FRUITS AND VEGETABLES
Saturday, July 18, 2009

CRITERIA FOR JUDGING

- Freedom of specimens from blemishes, care in harvesting, and preparing for display.
- Uniformity of size, shape, color, quality and trueness to type.
- Correct variety name on each variety is desirable.
- All root crops and bulbs should have tops trimmed to within one inch of the root or bulb.
- All leaf or heading of vegetable should be trimmed to the likeness of those on the market.
- Entries must be grown by the exhibitor.
- No restrictions are to be placed on the number of entries in each class. However, each entry must be of a different variety. Example: Tomatoes Jetstar, Supersonic, etc.
- Fruits and vegetables become the property of Monroe County Fair once exhibited unless special arrangements have been made with the Superintendent.
- Entries must be clean, free of blemishes, cracks, insect damage, dust or spray residue. Application of oil, wax or commercial "shine" products are NOT permitted.

Class

1. Acorn Squash (1)
2. Basil (sufficient quantity)
3. Beans, yellow (5 pods)
4. Beans, green (5 pods)
5. Beans, any other variety (5 pods)
6. Beets (3)
7. Broccoli (1 head)
8. Cabbage, any color (1 head)
9. Carrots (3)
10. Cauliflower (1 head)
11. Corn, sweet (3 ears)
12. Cucumbers (3)
13. Cucumbers, pickling (6)
14. Garlic (3 heads)
15. Herbs, any other unlisted (sufficient quantity)
(If 2 of more entries, sub-categories will be created.)
16. Lettuce, leaf (1 plant)
17. Lettuce, head (1 head)
18. Mint, Spearmint (3 sprigs)
19. Mint, Peppermint (3 sprigs)
20. Squash, Butternut (1)
21. Squash, Yellow Neck (1)
22. Squash, Zucchini (1)
23. Squash, any other variety (1)
24. Tomatoes, red (3)
25. Tomatoes, yellow or orange (3)
26. Tomatoes, green (3)

Class

27. Tomatoes, any other color (3)
28. Tomatoes, Cherry type (5 or spray)
29. Tomatoes, Plum type (5)
30. Eggplant (1)
31. Gourds (3 same variety)
32. Onions, large (3)
33. Onions, small (3)
34. Parsley, curly (3 sprigs)
35. Parsley, flat (3 sprigs)
36. Peas (3 pods)
37. Peppers, bell (3)
38. Peppers, any other type (3)
39. Potatoes, white (3)
40. Potatoes, red (3)
41. Potatoes, any other type (3)
42. Pumpkin (1)
43. Pumpkin, Mini (1)
44. White Radishes (5)
45. Red Radishes (5)
46. Raspberries (5)
47. Rosemary (representative quantity)
48. Thyme (representative quantity)
49. Any other fruit not listed (small (3); large (1))
50. Any other vegetable not listed (small (3); large (1))
51. Largest Vegetable (Adult) \$5
52. Largest Vegetable (Youth) \$5

